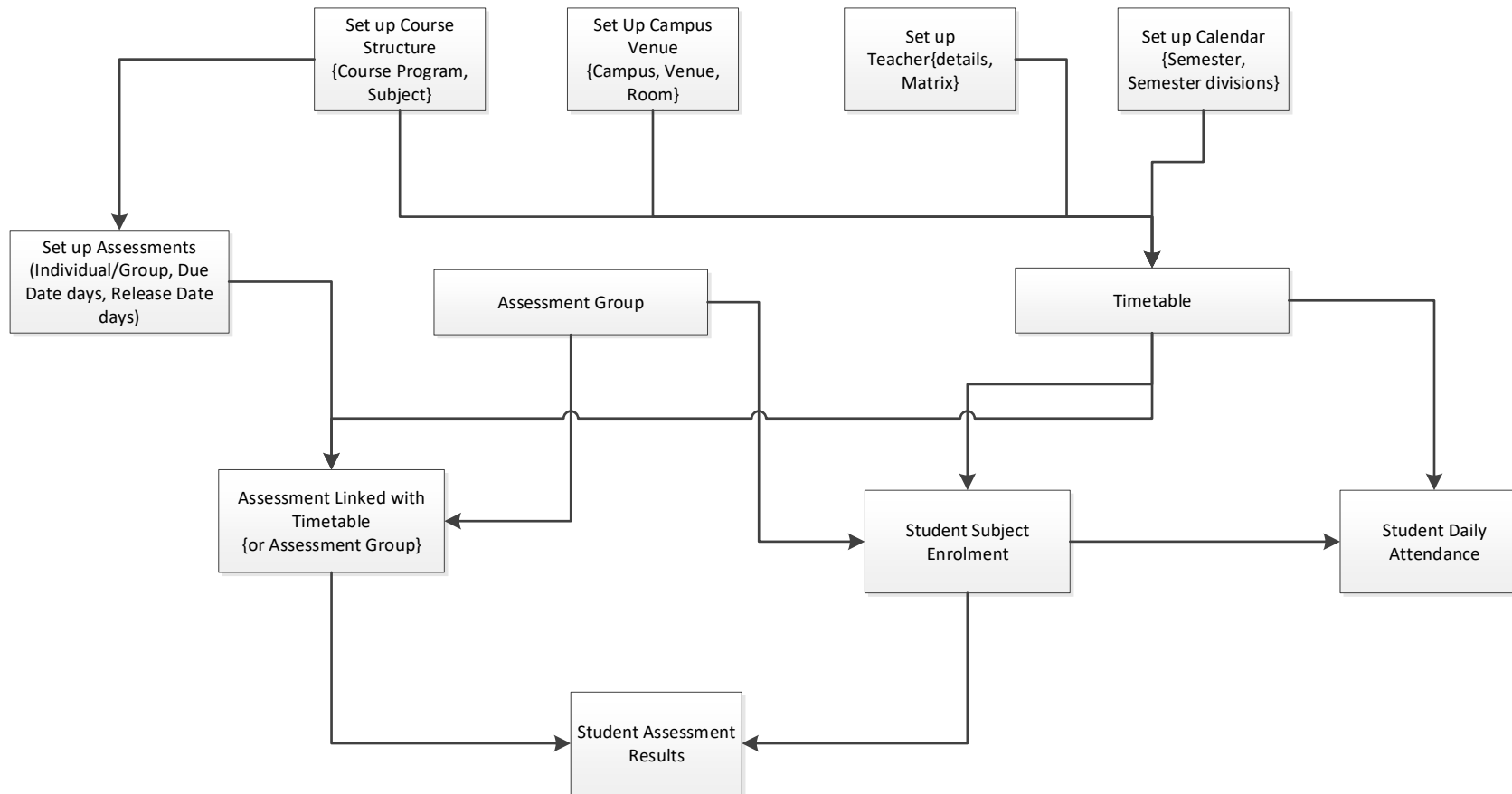


## Meshed HigherEd - Attendance Entry , Assessment Results Entry Workflow



# Attendance Workflow – Daily Attendance Entry

Phase

Precondition

**Pre-Condition**

- Create Timetable for Subject  
{Follow Timetable Workflow}

**Pre-Condition**

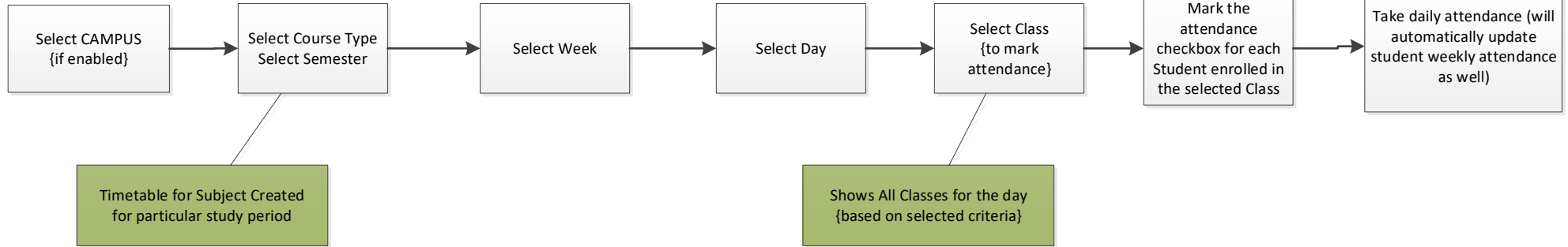
Teacher Portal  
{for Attendance entry}

**Pre-Condition**

Student must be enrolled in the Timetabled  
Class or Assessment Group for the Subject  
{Follow Student Subject Enrolment workflow}

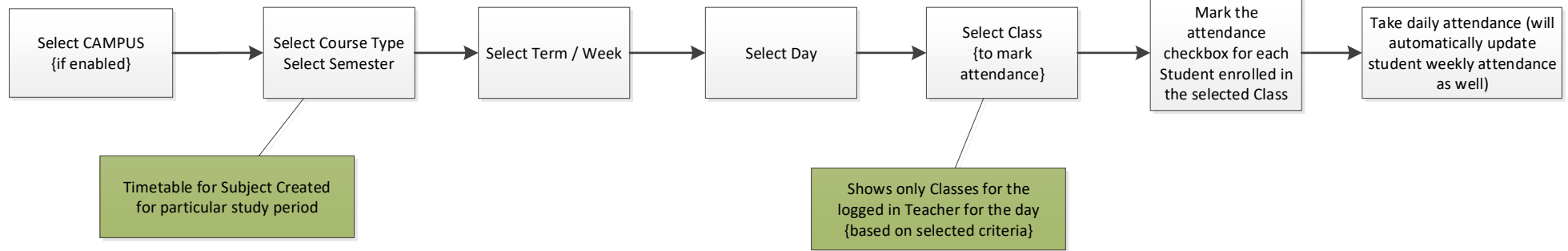
Student Services Portal

**Compliance >> Attendance Management >> Add Class Attendance (Daily / Weekly)**



Teacher Portal

**Attendance Entry >> Daily Attendance**

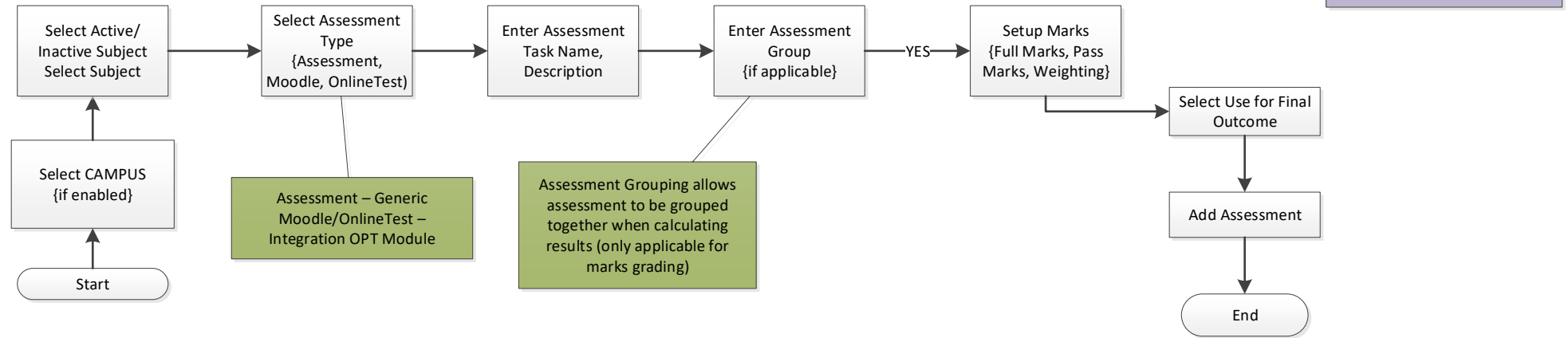


# Assessment Management Workflow

Phase

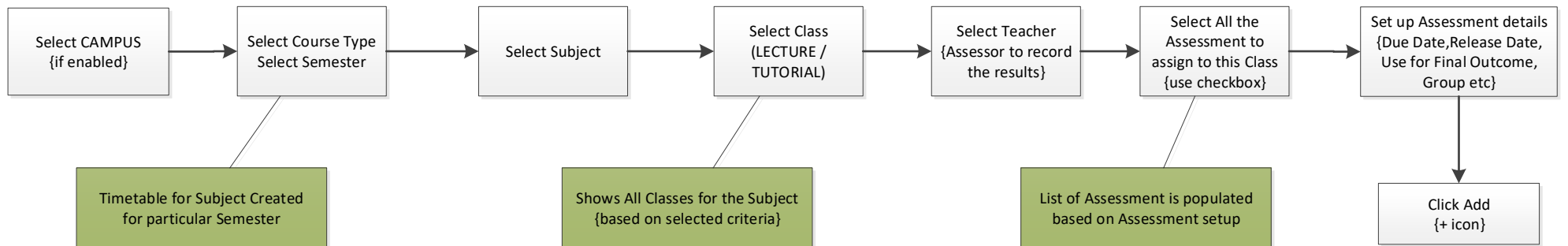
Assessment Setup

## Compliance >> Academic Progress >> Setup Assessment Tasks



Assessment Link with Timetable Class

## Compliance >> Academic Progress >> Task Entry



### NOTE

This process can be automated with default values while creating Timetable or Assessment Group {select "create assessment for this class" checkbox}

# Assessment Results Entry Workflow

Phase

Pre-Conditions

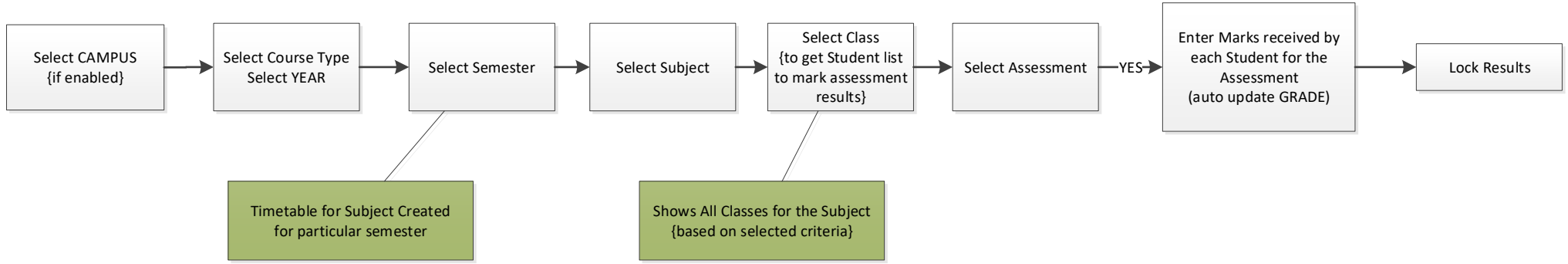
**Pre-Condition**  
- Create Timetable for Subject  
{Follow Timetable Workflow}

**Pre-Condition**  
Teacher Portal  
(Lecturer/Tutor to mark assessment)

**Pre-Condition**  
Student must be enrolled in the Timetabled  
Class or Assessment Group for the Subject  
{Follow Student Subject Enrolment workflow}

Student Services Portal

## Compliance >> Academic Progress >> Task Results Entry



Trainer/Teacher Portal

## Teacher Portal >> Results Management

